

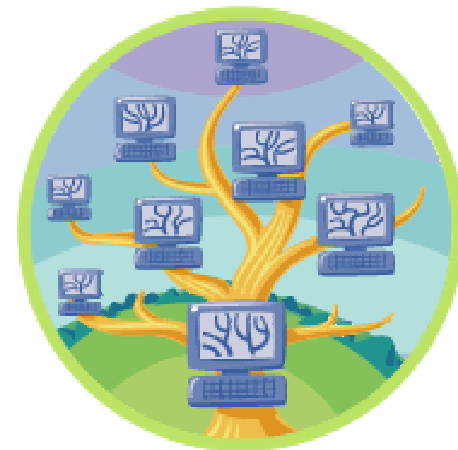
www.eu-egee.org

Job Submission

Giuseppe La Rocca
EGEE NA4 Generic Applications
INFN Catania

Contents

- ★ **Proxy and MyProxy**
- ★ **Job Submission Command**



Proxy and MyProxy

- Create a proxy certificate (*grid-proxy-init*)
- Printing information on a proxy certificate (*grid-proxy-info*)
- Destroying a proxy certificate (*grid-proxy-destroy*)

- Creating a long-term proxy (*myproxy-init*)
- Printing information on a long-term proxy (*myproxy-get-info*)
- Destroy a long-term proxy (*myproxy-destroy*)



Grid-proxy-init

To create a proxy certificate, issue the command:

>> **grid-proxy-init**

Your identity: /C=IT/O=GILDA/OU=Personal
Certificate/L=INFN Catania/CN=Giuseppe La
Rocca/Email=giuseppe.larocca@ct.infn.it

Enter **GRID** pass phrase for this identity:

Creating proxy Done

Your proxy is valid until: Thu May 27 04:11:19 2004

Grid-proxy-info

To print information about a proxy certificate, issue the command:

>> **grid-proxy-info**

subject : /C=IT/O=GILDA/OU=Personal Certificate/L=INFN
Catania/CN=Giuseppe La

Rocca/Email=giuseppe.larocca@ct.infn.it/CN=proxy

issuer : /C=IT/O=GILDA/OU=Personal Certificate/L=INFN
Catania/CN=Giuseppe La

Rocca/Email=giuseppe.larocca@ct.infn.it

type : full

strength : 512 bits

path : /tmp/x509up_u512

timeleft : 11:59:54

Grid-proxy-destroy

To destroy a proxy certificate, issue the command:
>> **grid-proxy-destroy**

Myproxy-init (1/2)

To create and store a long-term proxy certificate, the user must do:

>> myproxy-init -s grid001.ct.infn.it

**Your identity: /C=IT/O=GILDA/OU=Personal Certificate/L=INFN
Catania/CN=Giuseppe La Rocca/Email=giuseppe.larocca@ct.infn.it**

Enter GRID pass phrase for this identity:

Creating proxy Done

Proxy Verify OK

Your proxy is valid until: Wed Jun 2 17:00:46 2004

Enter MyProxy pass phrase:

Verifying password - Enter MyProxy pass phrase:

**A proxy valid for 168 hours (7.0 days) for user larocca now exists on
grid001.ct.infn.it.**

Myproxy-init (2/2)

If your certificate is going to expire, you can create a new long-term-proxy with a lifetime in hours less than the certificate's remaining one, by using the command

>>myproxy-init -s <server> -c <hours>

Where **-c** is the option to set the lifetime of delegated proxy on server.

Myproxy-get-delegation

To get a long-term proxy, issue the command:

>> myproxy-get-delegation -s grid001.ct.infn.it

Enter MyProxy pass phrase:

A proxy has been received for user larocca in
/tmp/x509up_u512

Myproxy-info

To retrieve information about a long-term proxy, issue the command:

>> myproxy-info

username: larocca

**owner: /C=IT/O=GILDA/OU=Personal Certificate/L=INFN
Catania/CN=Giuseppe La
Rocca/Email=giuseppe.larocca@ct.infn.it**

timeleft: 167:39:46 (7.0 days)

Myproxy-destroy

To destroying a long-term proxy, issue the command:

>> **myproxy-destroy -s grid001.ct.infn.it**

Job Submission Commands

- edg-job-list-match
- edg-job-submit
- edg-job-status
- edg-job-cancel
- edg-job-get-output

Job Submission

>> **edg-job-submit** [**-r** *<res_id>*] [**-c** *<config file>*] [**-vo** *<VO>*] [**-o** *<output file>*] *<job.jdl>*

- ★ **-r** the job is submitted directly to the computing element identified by *<res_id>*
- ★ **-c** the configuration file *<config file>* is pointed by the UI instead of the standard configuration file
- ★ **-vo** the Virtual Organization (if user is not happy with the one specified in the UI configuration file)
- ★ **-o** the generated *edg_jobld* is written in the *<output file>*

Other Job's commands (1/2)

★ **edg-job-list-match** *<job.jdl>*

- ▶ Lists resources matching a job description
- ▶ Performs the matchmaking without submitting the job

★ **edg-job-cancel** *<jobId>*

- ▶ Cancels a given job

Other Job's commands (2/2)

★ **edg-job-status -i <input file>** (or edg_jobld)

- ▶ Displays the status of the job
- ▶ -i the status information about edg_jobld contained in the <input file> are displayed

★ **edg-job-get-output --dir <jobld> -i <input file>**

- ▶ Returns the job-output (the OutputSandbox files) to the user in the <dir> directory